

27W Type-C PD[MOSFET]Charger

量産中



Item	Specifications
Dimensions	53 x 44 x 33 mm
Power Density	0.35W/cc
Power	5V/3A, 9V/3A, 12V/2.25A
Input Range	Universal Input
DoE Energy Star	Level VI
Compatibility	PD3.0 / QC4+
Safety	UL 60950, PSE
Sample	<ul style="list-style-type: none">• Available: within 4 wks• PSE application fee for authorized valid copy NOT included.

45W Type-C PD [MOSFET]Charger

量産中



Item	Specifications
Dimensions	50 x 50 x 28 mm(foldable US pin)
Power Density	0.64W/cc
Power	5V,9V,12V,15V/3A, 20V/2.25A(PD3.0) 3.3V-21V, 2.15A Max.(PD3.0 PPS)
Input Range	Universal Input
DoE Energy Star	Level VI
Compatibility	PD3.0 /AFC/ FCP/ QC4+
Safety	CCC, CB, UL 62368
Sample	<ul style="list-style-type: none">• Available: within 6 wks• PSE application fee for authorized valid copy NOT included.

65W Type-C PD [MOSFET]Charger

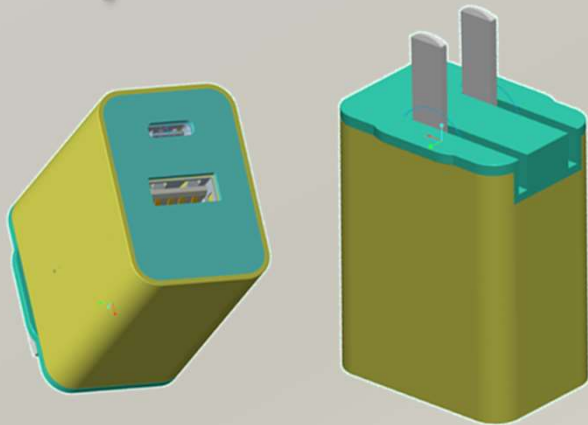
量産中



Item	Specifications
Dimensions	69 x 69 x 30 mm (foldable US pin)
Power Density	0.93W/cc
Power	5,9,12,15V/3A, 20V/3.25A(PD3.0) 3.3V-21V, 3.25A Max. (PD3.0 PPS)
Input Range	Universal Input
DoE Energy Star	Level VI
Safety	CCC, UL 62368, PSE
Compatibility	PD3.0 / AFC/ FCP/ BC1.2/ QC4+
Sample	<ul style="list-style-type: none">• Available: within 6 wks• PSE application fee for authorized valid copy NOT included.

Multi-Ports 25W PD [GaN] Charger

開発中
8月予定

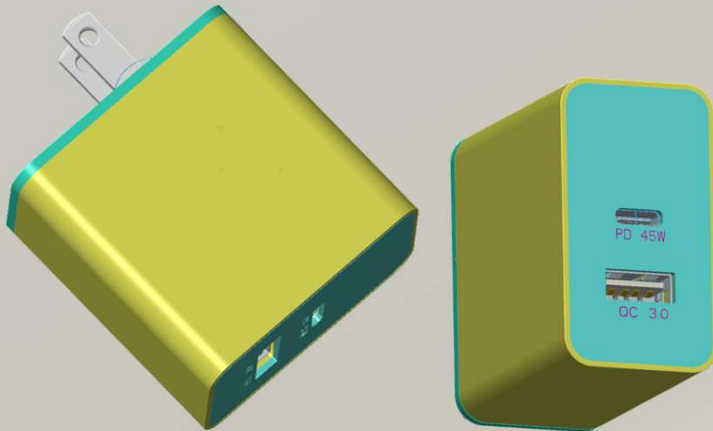


(3D modeling)

Item	Specifications
Dimensions	49(L) x 37(W) x 26(H) mm (foldable US pin)
Power Density	0.53W/cc
Power	Type-C: 5V3A,9V2.22A, 12V2.1A Type-A : 5V3A,9V2A, 12V1.5A Type -C+Type-A : 5V4.8A
Input Range	Universal input
DoE Energy Star	Level VI
Compatibility	PD3.0 /Apple mode/ AFC/ FCP/ BC1.2/ QC3.0
Safety	Comply with UL62368, BSMI
Sample	<ul style="list-style-type: none">• Available: end of June / MP: end of August• Std. case/tooling and BSMI are included.

Multi-Ports 45W PD [MOSFET]Charger

開発中
8月予定



(3D modeling)

Item	Specifications
Dimensions	51(L) x 50(W) x 28(H) mm (foldable US pin)
Power Density	0.63W/cc
Power	Type-C1: 5V3A, 9V3A, 12V3A, 15V3A, 20V2.25A Type-A1 : 5V3A,9V2.22A, 12V2.1A Type -C1+Type-A1 : 30W+15W
Input Range	Universal input
DoE Energy Star	Level VI
Compatibility	PD3.0 /Apple mode/ AFC/ FCP/ BC1.2/ QC3.0
Safety	Comply with UL62368, BSMI
Sample	<ul style="list-style-type: none">• Available: end of June / MP: end of August• Std. case/tooling and BSMI are included.

Multi-Ports 65W PD[**GaN**]Charger [形状参考]

開発中

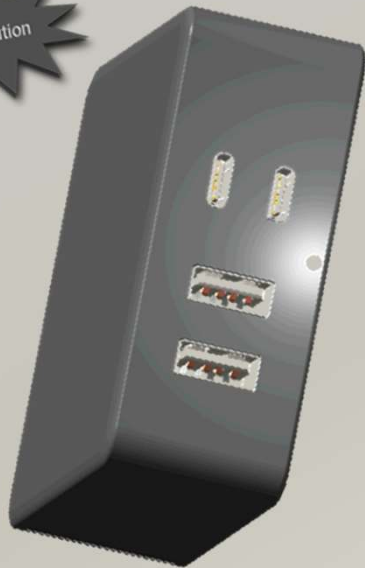


(Reference design)

Item	Specifications
Dimensions	55(L) x 55(W) x 30(H) mm (foldable US pin)
Power Density	0.72W/cc
Power	Type-C1: 5V3A,9V3A,12V3A,15V/3A,20V3.25A QC3.0&PD3.0 Type-C2: 5V3A, 9V2A, 12V1.5A, PD3.0 & QC3.0 Type-C1+Type-C2 : 45W+18W
Input Range	Universal input
DoE Energy Star	Level VI
Compatibility	PD3.0/QC3.0/QC2.0/FCP/AFC/BC1.2
Safety	Comply with UL62368
Sample	<ul style="list-style-type: none">• Available : end of July• Case/tooling and certification fee are not included.

Multi-Ports 130W PD [GaN]charger [形状参考]

開発中



Item	Specifications
Dimensions	80(L) x 80(W) x 30(H) mm
Power Density	0.68W/cc
Power	C1=C2: 5V3A,9V3A,12V3A,15V/3A,20V5A, PD3.0 C1+C2: 100W (dynamic load sharing) A1=A2: 5V/3A, 9V/3A, 12V/2A, 12V/2.5A A1+A2: 15W+15W (5V3A)
Input Range	Universal input
DoE Energy Star	Level VI
Compatibility	PD3.0 /Apple mode/ AFC/ FCP/ BC1.2/ QC4+
Safety	Comply with UL62368
Sample	<ul style="list-style-type: none">• Available: end of July / MP: end of September• Case/tooling and certification fee are not included.